



MINISTRY OF PLANNING

Identification of Poor Households Programme

Summary Identification of Poor Households



Presented by Mr. Maun ChanSarak

By Mr. Maun ChanSarak

Contents

1

- What is Identification of Poor Household?

2

- Use of IDPoor data for Social Protection - examples

3

- Procedure of IDPoor implementation

4

- Key messages of Sub-degree of IDPoor

5

- Key outputs of IDPoor process

1. What is Identification of Poor Household?

- ◆ Identifies which specific households are poor, and their level of poverty
- ◆ For household targeting – directly target services and development assistance to poor households and individual members in order to help lift them out of poverty and to protect them from the impact of shocks
- ◆ Identifies rates of poverty in different areas
- ◆ For geographical targeting – data can be used for calculating comparative poverty levels of districts, communes, villages, in order to identify priority areas for assistance.

2. Use of IDPoor data for Social Protection - examples

- ◆ Provision of free or discounted medical services and reimbursement of other associated costs (e.g. through Health Equity Funds or Social Health Insurance)
- ◆ Scholarships, waiving of tuition fees, or other financial support to poor children for general education and vocational training
- ◆ Agriculture-related services, such as distribution of agricultural inputs (fertiliser, seed, livestock) and training on agricultural and animal husbandry techniques
- ◆ Allocation of social concession land

2. Use of IDPoor data for Social Protection - examples

- ◆ Distribution of free food (supplementary feeding and emergency feeding) and basic necessities
- ◆ Food or cash for work schemes (selection of households if there are more interested workers than jobs)
- ◆ Cash Transfer programmes (e.g. to improve child and maternal nutrition, health and education)
- ◆ Wide range of other activities targeted to poor communities and households by NGOs, pagoda committees, charities

2. IDPoor and the National Social Protection Programme

“The RGC intends to make IDPoor the primary targeting methodology for all social protection schemes, while still allowing for the use of complementary methodologies where their use is justified.”

*National Social Protection Strategy for the Poor and Vulnerable (English version),
page 44*

3. IDPoor Management and Implementation Structure

Implemented by national and sub-national government structures, and community structures

Ministry of Planning

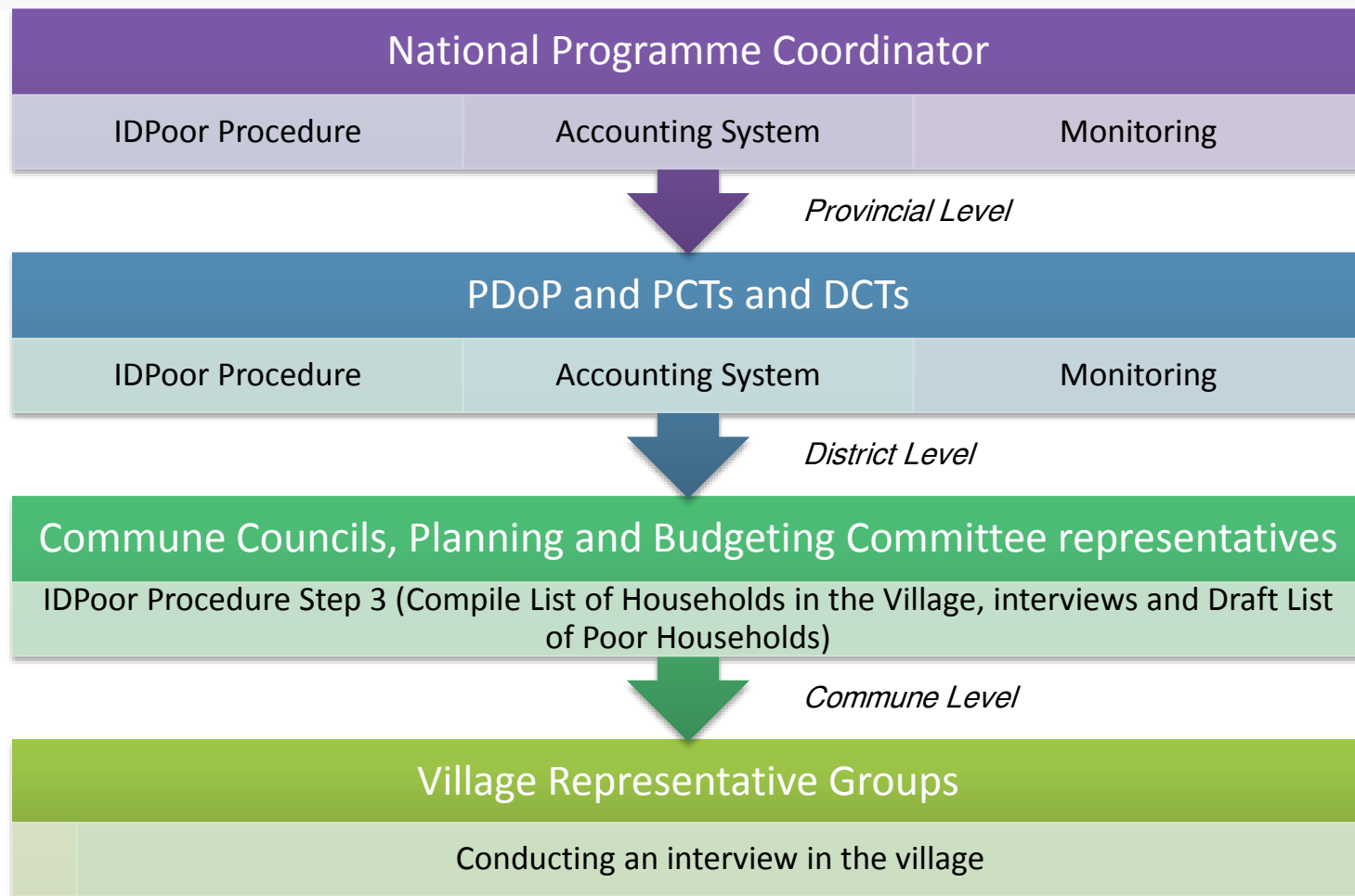
Provincial Departments of Planning (PDoP)

Provincial and District Coordination Teams
(PCTs and DCTs)

Commune Councils, Planning and Budgeting
Committee representatives (CCPBCR)

Village Representative Groups, selected by
villagers themselves

3. Training System



3. IDPoor Procedures

- ◆ **Step 1:** Establish and train the Planning and Budgeting Committee Representative Group (PBCRG)
 - ◆ PBCRG formed from members of the existing Planning and Budgeting Committee in each commune
 - ◆ Some PBCRG members become trainers of VRGs
- ◆ **Step 2:** Establish and train Village Representative Groups (VRGs)
 - ◆ Conduct First Village Meeting to select members of VRG
 - ◆ Commune-level trainers train VRGs, conduct interview practice

3. IDPoor Procedures

- ◆ **Step 3:** Compile List of Households in the Village, interviews and Draft List of Poor Households
 - ◆ Compile List of Households in the Village for Identification of Poor Households
 - ◆ Conduct household interviews
 - ◆ Count scores, prepare Draft Household Poverty Categorisation List
 - ◆ Discuss special household circumstances in VRG and modify classifications of some households as required
 - ◆ Hold Commune Review Meeting to check Draft Household Poverty Categorisation List
 - ◆ Prepare First Draft List of Poor Households and publicly display in village

3. IDPoor Procedures

- ◆ **Step 4:** Village Consultation Meeting, Receive villager complaints and Prepare the Final Draft List of Poor Households
- ◆ Display First Draft List of Poor Household in public place in village
- ◆ Conduct Village Consultation Meeting
- ◆ Receive villager complaints and suggestions
- ◆ Prepare the Final Draft List of Poor Households, publicly display, submit to Commune Council

3. IDPoor Procedures

- ◆ **Step 5:** Prepare and endorses Final List of Poor Households
 - ◆ Commune Council reviews Final Draft Lists of Poor Households for each village, and coordinates the resolution of any outstanding complaints
 - ◆ Commune Council endorses Final List of Poor Households prepared by the VRG
 - ◆ Commune Council sends all relevant documents to Provincial Department of Planning for data entry

3. IDPoor Procedures

- ◆ **Step 6:** Entry of data into Database of Poor Households
- ◆ **Step 7:** Photography
 - ◆ Photography Teams photograph Poor Households (conducted by partner NGOs)
 - ◆ Equity Cards printed, Provincial Department of Planning distributes them to Commune Councils for distribution to villagers

Re-implementation of IDPoor (data update) is planned every three years

3. Questionnaire

- ◆ Questionnaire – scoring questions (section C)
 - ◆ Housing – roof, wall, floor area, general condition
 - ◆ Productive land area in hectares (land-based villages) / fishing equipment (floating villages) / other sources of income such as waged labour, salary or business.
 - ◆ Animal raising (including fish raising for sale)
 - ◆ Electronic and other durable assets
 - ◆ Means of transportation (includes boats for floating villages)
 - ◆ Borrow rice or buy rice on credit (indicates capacity to meet own food needs)
 - ◆ Ratio of dependent household members to productive members

3. Questionnaire

- ◆ Questionnaire – non-scoring questions (section D)
 - ◆ Special circumstances of households, for VRG discussion:
 - ◆ Unexpected problems or crises which caused household to lose income, produce less food, sell assets, or borrow money in last 12 months
 - ◆ Number of children aged 6-11 years who missed school for at least 1 month in last 12 months
 - ◆ Special household situations (disabled, sick, elderly, single female-headed households with many young children, no adults, etc)
 - ◆ Circumstances that can improve the living standard of the household (e.g. remittances from children or relatives, sale of land)

3. Poverty Categories

◆ Two poverty categories:



4. Key messages of Sub-degree of IDPoor

- ◆ Sub-degree of IDPoor was approved by Council of Ministers on **December 9, 2011** and signed by Prime Minister of the Kingdom of Cambodia on **December 27, 2011**
- ◆ **Article 5:** MoP is the competent ministry entrusted with managing the process of implementation of the Procedures for Identification of Poor Households in the Kingdom of Cambodia, and updating poor household data and information every three years.
- ◆ **Article 11:** Identification of poor households must be implemented according to the national Procedures for Identification of Poor Households of the Ministry of Planning

4. Key messages of Sub-degree of IDPoor

- ◇ **Article 16:** Relevant government ministries/institutions, non-governmental organisations and local communities are eligible to access and utilise data from the Ministry of Planning's national Database of Poor Households. All use and further distribution of poor household data, whether in part or in its entirety, must be carried out free of charge, and only be for the purpose of reducing poverty and in the public interest.
- ◇ **Article 17:** Relevant government ministries/institutions, non-governmental organisations and local communities which intend to provide services or assistance to poor households or individuals, including any appropriate emergency interventions, must primarily use valid national poor household data.

5. Key outputs of IDPoor process

- ◆ Final List of Poor Households, handwritten and approved by Commune Councils and kept by all village chiefs and commune offices
- ◆ Electronic database reports, distributed on CD-ROM
- ◆ IDPoor Atlas (Book and DVD Interactive IDPoor Atlas)
- ◆ Equity Card

5. Equity Card

ព្រះរាជាណាចក្រកម្ពុជា
ជាតិ សាសនា ព្រះមហាក្សត្រ

គម្រោងអភិវឌ្ឍន៍សេដ្ឋកិច្ចក្រសួងក្រីក្រ
ប័ណ្ណសមធម៌



* 5 0 5 0 1 0 1 0 1 0 0 0 1 *

ប័ណ្ណនេះពិតទី១

លេខកូដ

0	5	0	1	0	1	0	1
---	---	---	---	---	---	---	---

-

0	0	0	1
---	---	---	---

ជុំនៃការប្រមូលទិន្នន័យ 5
ថ្ងៃខែឆ្នាំចេញប័ណ្ណ 26/03/2012
កម្រិតភាពក្រីក្រ

2

ខេត្ត : កំពង់ស្ពឺ
ឃុំ : បរសេដ្ឋ
ឈ្មោះមេគ្រួសារ : ខៀវ វិរិម

ស្រុក : បរសេដ្ឋ
ភូមិ : ព្រៃឈើទាល
ភេទ : ប្រុស

លេខកូដគ្រួសារ
ឆ្នាំកំណើត : 1958

ព័ត៌មានអំពីប័ណ្ណសមធម៌

- ប័ណ្ណនេះ ជាប័ណ្ណរបស់រាជរដ្ឋាភិបាលកម្ពុជា ផ្តល់ជូនគ្រួសារក្រីក្រមានឈ្មោះក្នុងបញ្ជីគ្រួសារក្រីក្ររបស់ភូមិ ដែលបានបញ្ជាក់ទទួលស្គាល់ដោយក្រុមប្រឹក្សាឃុំសង្កាត់ ។
- ប័ណ្ណនេះនឹងអស់សុពលភាពក្រោយរយៈពេល៤ឆ្នាំបន្ទាប់ពីការអនុម័តបញ្ជីគ្រួសារក្រីក្រដោយក្រុមប្រឹក្សាឃុំសង្កាត់ ឬនៅពេលក្រសួងផែនការចេញប័ណ្ណសមធម៌ថ្មី នៅពេលធ្វើបច្ចុប្បន្នភាពបញ្ជីគ្រួសារក្រីក្រលើកក្រោយ ។
- មានតែសមាជិកនៃគ្រួសារដែលបានទទួលប័ណ្ណ មានសិទ្ធិប្រើប្រាស់ប័ណ្ណនេះ ។
- សមាជិកគ្រួសារ អាចយកប័ណ្ណនេះទៅបង្ហាញនៅមណ្ឌលសុខភាព ឬ មន្ទីរពេទ្យរដ្ឋ ឬ នៅស្ថាប័ន និងអង្គការផ្សេងៗដែលមានការផ្តល់សេវាឬជំនួយ ដើម្បីអោយស្ថាប័ន និងអង្គការទាំងនោះ ពិនិត្យលទ្ធភាពផ្តល់សេវាឬជំនួយ ដល់សមាជិកគ្រួសារនោះ ។
- ប្រសិនបើលោក-អ្នករើសបានប័ណ្ណនេះនៅកន្លែងណាមួយ សូមយកទៅប្រគល់អោយក្រុមប្រឹក្សាឃុំសង្កាត់នៃឃុំសង្កាត់ដែលមានបញ្ជាក់ឈ្មោះលើប័ណ្ណនេះ ឬយកទៅប្រគល់អោយមន្ទីរផែនការខេត្ត ។

ថ្ងៃខែឆ្នាំចេញកំណត់សម្គាល់ដោយក្រុមប្រឹក្សាឃុំសង្កាត់ 17/10/2011

ត្រាហ្សុំ សង្កាត់

ហត្ថលេខាមេឃុំ មេសង្កាត់

ឈ្មោះ

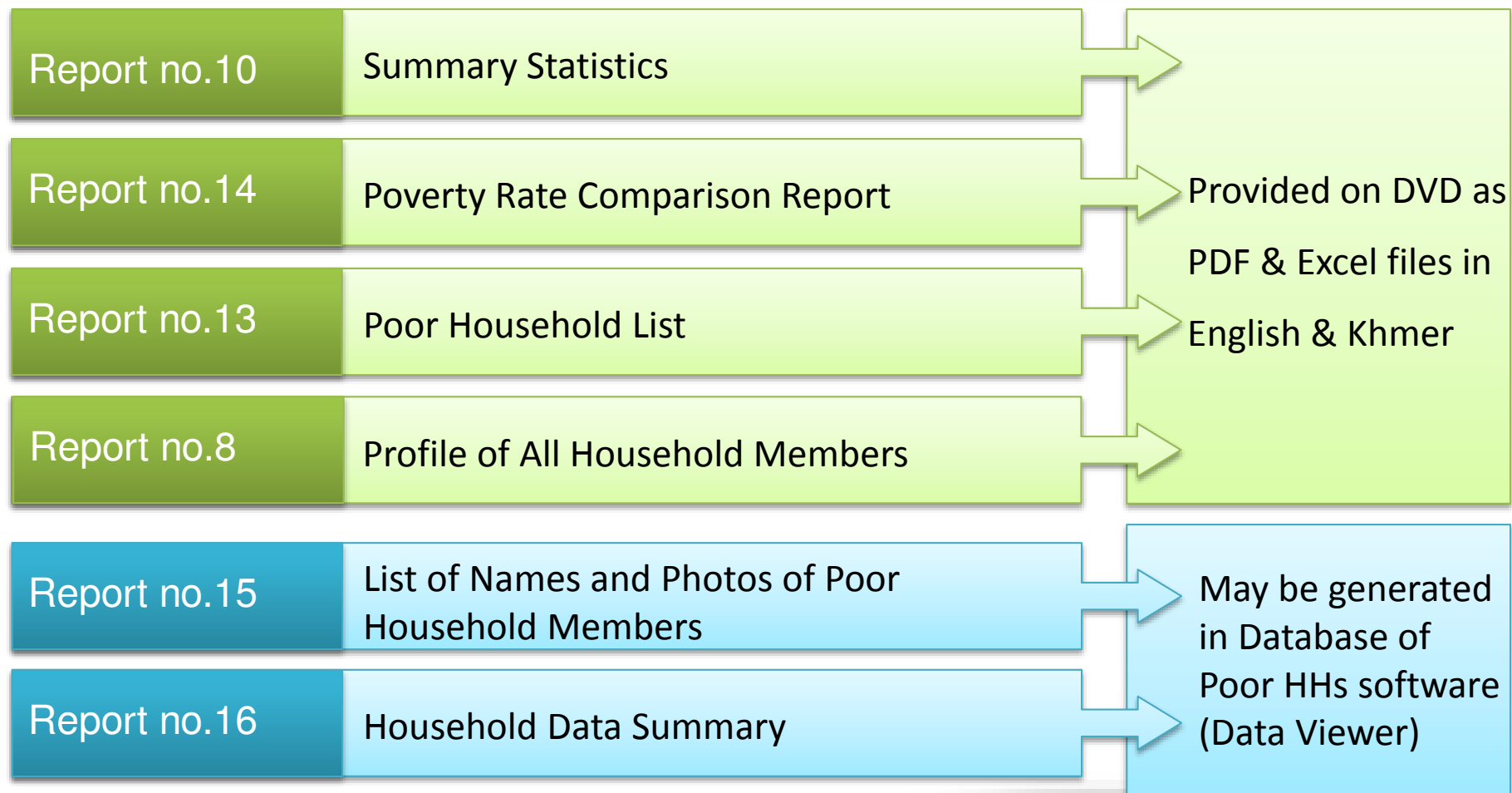


5. Planned Coverage Areas 2012-2014 (Updating)

Round 6 (2012) (Rural)	Round 7 (2013) (Rural)	Round 8 (2014) (Rural and Urban)
<ol style="list-style-type: none">1. Banteay Meanchey2. Kampong Cham3. Kampong Thom4. Kratie5. Phnom Penh6. Siem Reap7. Stung Treng8. Otdar Meanchey	<ol style="list-style-type: none">1. Battambang2. Kampong Chhang3. Kandal4. Preah Vihear5. Pursat6. Ratanakiri7. Takeo8. Pailin	<ol style="list-style-type: none">1. Kampong Speu2. Kampot3. Koh Kong4. Mondulkiri5. Prey Veng6. Preah Sihanouk7. Svay Rieng8. Kep

(3-year cycle for updating)

5. Main report types



5. Main report types

◆ Report no.10: Summary Statistics- Database of Poor Households

- ◆ This report provides a summary of results of identification of poor households for all areas covered in a province in a specific Data Collection Round.
- ◆ Total number of villages, communes and districts covered by the identification process in the province. Number and average percentage of households identified as poor in all villages, broken down by Poverty Category. Number and percentage of households headed by males and females in each Poverty Category.

Report 10: Summary Statistics

Data collection round: 3 Year: 2009 Date of Query: 17/11/2009

Filter: Area Covered: Villages Covered by IDPoor

Selected Provinces: Kampong Thom

1. Total Number of Areas Covered by Identification Process

	Provinces	Districts	Communes	Villages
Areas covered	1	8	80	732
Out of total existing	1	8	81	740

2. Total Number of Poor HOUSEHOLDS and Average Percentage of Poor HOUSEHOLDS

Poor Level 1		Poor Level 2		Poor Level 1 & 2 Combined	
Total HHs	Average % of Total HHs per Village	Total HHs	Average % of Total HHs per Village	Total HHs	Average % of Total HHs per Village
21080	17.2 %	20192	16.6 %	41272	33.5 %
Total Number of Households in Coverage Area (Poor and Non-Poor):					131981

3. Total Number of PERSONS and Average Percentage of PERSONS from Poor Households

5. Main report types

◆ Report no.14: Poverty Rate Comparison Report

- ◆ This report is useful for organizations and institutions who wish to target services or assistance to the poorest villages, or to poor households living within the poorest villages, in the area covered by the process for identification of poor households.

- ◆ It shows the percentage of Poor Level 1 and 2 households and persons.

Report 14: Poverty Rate Comparison Report

Data collection round: 5 Year: 2011 Date of Query: 16

Filter: Area Covered: All villages with data from List of Poor Household

Village Selection: All Villages

Type of Report: Household-Based Report

District Comparison Table

Geographical Code	Province	District	Poor 1 HHs	Poor 2 HHs	Poor 1 HHs %	Poor 2 HHs %	Total Poor 1&2 HHs %	Total HHs in District
0501	Kampong Speu	Basedth	2731	3947	9.5 %	13.7 %	23.2 %	28833
0502	Kampong Speu	Krong Chbar Mon	438	286	5.1 %	3.3 %	8.4 %	8642
0503	Kampong Speu	Kong Pisei	3415	2996	13.1 %	11.5 %	24.6 %	26069
0504	Kampong Speu	Aoral	605	1015	9.1 %	15.2 %	24.2 %	6682
0505	Kampong Speu	Odongk	2484	2678	9.8 %	10.6 %	20.5 %	25224
0506	Kampong Speu	Phnum Sruoch	1662	1618	8 %	7.8 %	15.8 %	20803
0507	Kampong Speu	Samraong Tong	2963	4131	9.5 %	13.3 %	22.8 %	31060
0508	Kampong Speu	Thpong	1188	1270	10.1 %	10.8 %	20.9 %	11786
Total/Average			15486	17941	9.7%	11.3%	21%	159099

5. Main report types

◆ Report no.13: Poor Household List

- ◆ This report provides basic information about all households in the List of Poor Households for a village.
- ◆ It shows the name and sex of the Head of Household, the name of the spouse, and the Poverty Category for each household. It also shows the number and percentage of households in Poverty Category 1 and 2, and the total number and percentage of poor households.

Report 13: Poor Household List

Data collection round: 3 Year: 2009 Date of Query: 23/10/2009

Date of approval by Commune Council: 21/05/2009

Filter: Area Covered: All villages with data from List of Poor Household

Village Selection: All Villages

<u>Province</u>	<u>District</u>	<u>Commune</u>	<u>Village</u>
06 Kampong Thom	07 Santuk	03 Kampong Thma	01 Prey Phlu

	<u>Number of HHs</u>	<u>% of Total HHs in Village</u>
--	----------------------	----------------------------------

Total Households in Village:	101	100%
Total P1 Households:	9	8.9 %
Total P2 Households:	25	24.8 %
Total P1 & P2 Households:	34	33.7 %

HH ID Code	Name of Household Head	Sex	Name of Spouse	Poverty Category
0002	ចាន់ ហេង	Female	ស៊ី ធា	1
0050	ហួត ឡើង	Female		1
0056	ឡុង ឌី	Male	សាន តុត	1
0074	ប៊ែន ឃ្យង	Male	ឃ្យង ណាង	1

5. Main report types

◆ Report no.8: Profile of All Household Members

- ◆ This report presents key data on all household members of each household that was included in the List of Poor Households and that had data entered from the Questionnaire.
- ◆ The data provided for each household member includes Name, Relationship to the Head of Household, Sex, Year of Birth, Age, and Poverty Category.

Report 8: Profile of All Household Members

Data collection round: 3 Year: 2009 Date of Query: 23/10/2009

Filter: Households Covered: All HHs with data from Questionnaire
Household Selection: All Households
Village Selection: All Villages

<u>Province</u>	<u>District</u>	<u>Commune</u>	<u>Village</u>
06	07	03	01
Kampong Thom	Santuk	Kampong Thma	Prey Phlu

HH ID Code	Household Member Serial No.	HH Member Code	Name of Household Member	Relationship to HH Head	Sex	Year of Birth	Age	Poverty Category
0001	1	001	ឡុង សុខ	Head of Household	Male	1970	39	2
0001	2	002	ចាន់ ហ៊ុន	Wife/Husband	Female	1971	38	2
0001	3	003	ឡុង ហ៊ុន	Child	Female	1998	11	2
0001	4	004	ឡុង សុខ	Child	Male	1995	14	2
0001	5	005	ឡុង សុខី ក្រី	Child	Female	2002	7	2
0001	6	006	ឡុង ស្រី ឈី	Child	Female	2006	3	2
0002	1	001	ចាន់ ហ៊ុន	Head of Household	Female	1963	46	1
0002	2	002	ស៊ី ធា	Wife/Husband	Male	1993	16	1

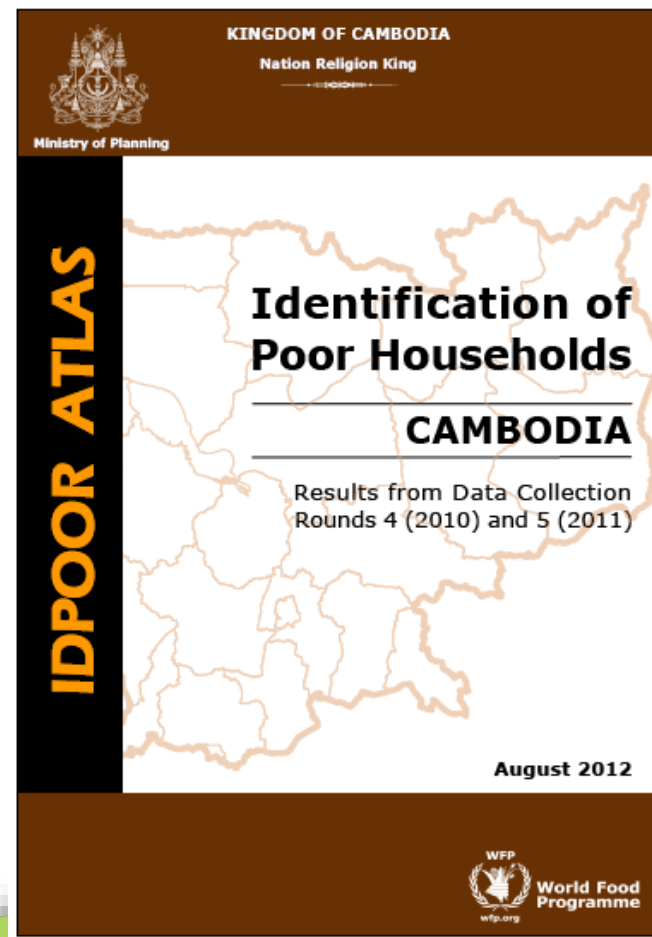
Page 1

5. IDPoor Atlas Rounds 4 (2010) & 5 (2011)

- ◆ Present IDPoor data from Rounds 4 and 5 in a format using maps, graphs and tables to enhance its visualisation, comparison, and interpretation.
- ◆ Conduct more extensive analyses of IDPoor data from Sections C & D of household questionnaire to explore and synthesise key characteristics of poor households.
 - ◆ **Section C:** Socio-economic characteristics
 - ◆ **Section D:** Special circumstances

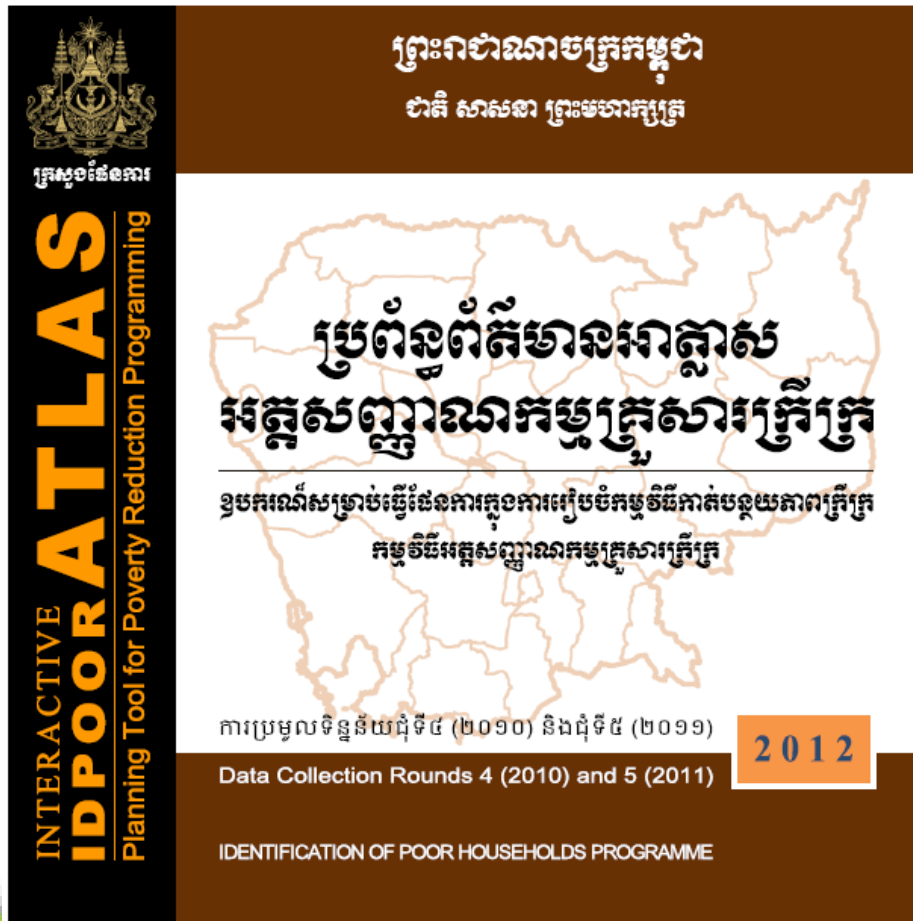
5. IDPoor Atlas Rounds 4 (2010) & 5 (2011)

Available in Khmer and English



5. IDPoor Atlas Rounds 4 (2010) & 5 (2011)

Available in Khmer and English

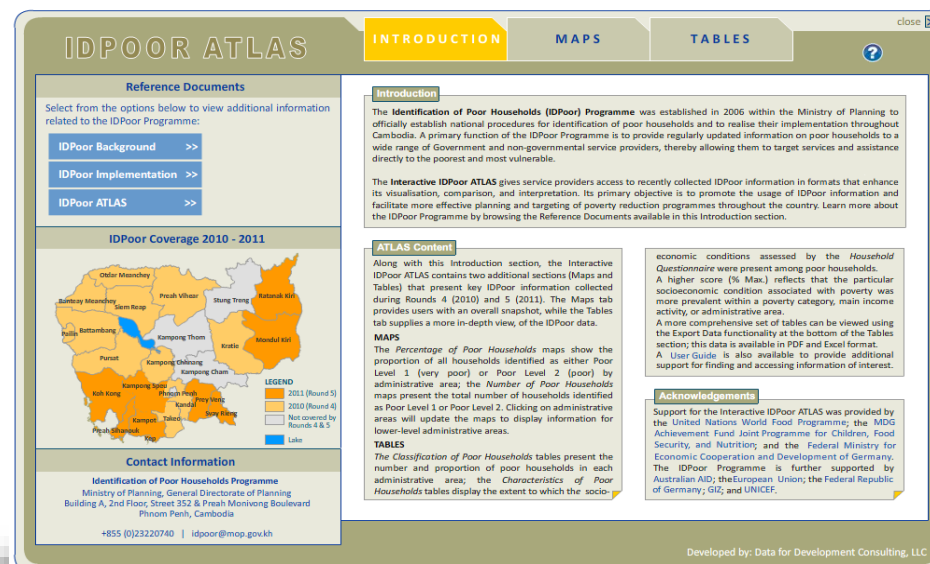


5. The Interactive IDPoor Atlas (on DVD)

Features

- ◆ Quick access to IDPoor reference documents
- ◆ Navigate administrative areas, “zoom in & out”
- ◆ Export data in PDF (structured) or Excel (flat)
- ◆ Print maps for use in planning and targeting
- ◆ 3 main sections:

1. **Introduction:** Key documents
2. **Maps:** Geographic distribution
3. **Tables:** Tabulated presentation



5. Future Plan for Poor Households Data

- ◆ IDPoor Online Database
 - ◆ DataViewer
 - ◆ Equity Card Verification
 - ◆ Downloadable the Reports from Database of Poor Households
 - ◆ IDPoor Atlas
- ◆ DVD's Reports from Database of Poor Households
- ◆ Online Database of Users and Stakeholders Data Registration

*IDPoor data is an important tool
for equitable and efficient
geographic and household targeting!*

Contact Info

◆ Additional Info

- ◆ Ministry of Planning, Building A, 2nd Floor, cnr St. 352 & Monivong Blvd., Phnom Penh
- ◆ Tel : (023) 220 740
- ◆ Fax : (023) 726 264
- ◆ E-mail : idpoor@mop.gov.kh
- ◆ Webpage : www.mop.gov.kh/Projects/IDPoor/tabid/154/Default.aspx